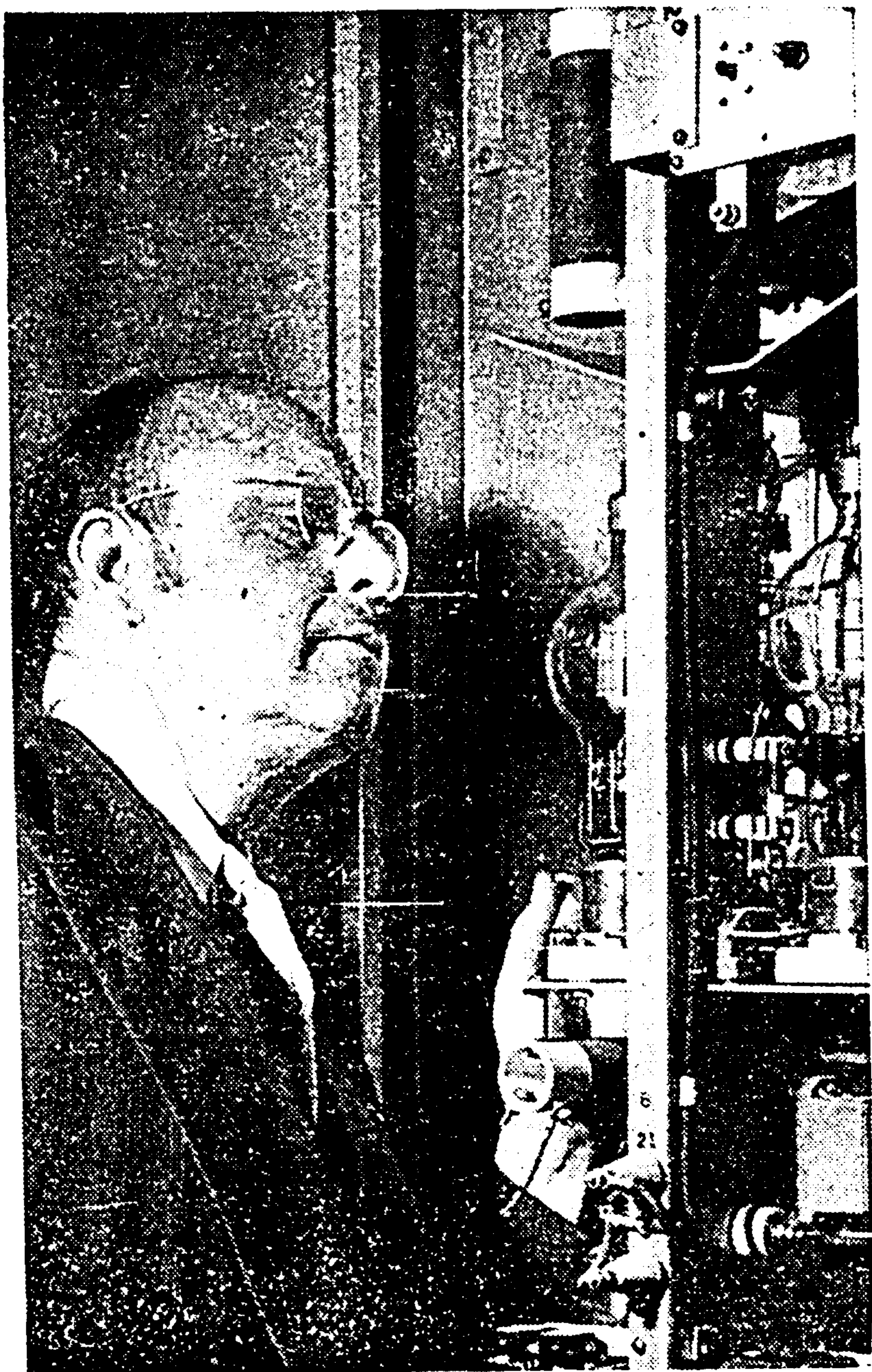


# On Receiving End of New Radio



The new radio transmitter for WKDU, police radio, went into effect Monday and two-way radio whereby operator and police cruiser driver could talk back and forth became a reality. Above Charles S. Jones, superintendent of communications, looks over the new transmitter.

## Cincinnati Puts Two-Way Police Radio in Operation

### First Official "Talk Back" Received Clearly, Eden Park Station Reports

Crime was put "on the spot" in Cincinnati Monday as the new two-way police radio system went into action.

The talk-back system between police cruisers and the Eden Park communications headquarters was tested Sunday afternoon to take advantage of a light day in police calls, but the new system was not officially cut in until 7 a. m. Monday.

The two-way system was in use within a few minutes. A few minutes after 7 a. m. Patrolmen Edward Rapp and William Klosterman, in a cruiser, were notified that the Life Squad was responding to the Courthouse.

"Ok, Station X," the patrolmen called back after being directed to answer. The message came in clear and unblurred according to men on duty at the Eden Park center.

There are 32 police autos equipped with the two-way radio system. Two of these are held in reserve in case of accidents to the other autos. More of the dual-equipped autos will be added as needed.

Ten fire department cars and

the auto of Charles S. Jones, superintendent of communications, also are equipped with the two-way apparatus.

Construction on the two-way system was started last May and largely completed by September with the exception of certain parts which were difficult to obtain because of the war. Cost was \$46,000.

Radio operators have a complete picture of where every police car in the city is through use of a huge map covering the entire side of one wall at the headquarters. By means of red and green lights operators can tell if the cars are in service or waiting to be called.

In case of emergency, the operators at the Eden Park center can switch back to the old police radio system if the new radio system is temporarily disabled, Paul J. Riemar, radio consultant, who supervised the installation of equipment, pointed out.